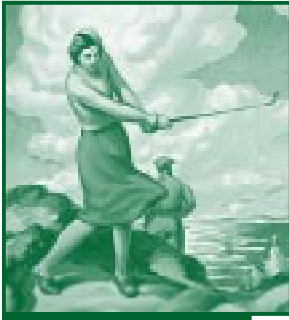




# ARIZONA WOMEN'S GOLF NEWS

A PUBLICATION OF THE ARIZONA WOMEN'S GOLF ASSOCIATION

WINTER - 2002



## WHAT'S NEW FOR 2002

### Directory & Newsletter Distribution

As the leaders of a vital and growing organization, the Arizona Women's Golf Association Board of Directors has the responsibility to continually review our operations and make changes where necessary to better meet the needs of our members. Over the last couple of years, members have expressed concerns and suggestions in several areas, which the Board has taken to heart and addressed. 2002 will be no exception.

In the past, the AWGA has mailed a copy of the Tournament Calendar and Directory to each and every member whose address is in the member database. Through the Communications Committee, the Board discovered that most members do not use the directory at all, while those who do use it, mostly club officers and AWGA volunteers, find it

\*Continued on page 5

### Membership Fee Increase

The AWGA Board of Directors goes through a thorough budget review each year in order to insure that our organization continues to be in the best position to fulfill our mission, which is to promote and maintain the best interests and true spirit of the game of golf among women in Arizona. As most of you are aware, the Board of Directors found it necessary this year to raise membership fees from \$15.00 to \$20.00 per member. Fees were last increased in 1997.

We have heard from some of you regarding the timing of this announcement. We recognize that most of our clubs are on a different fiscal year than the AWGA. The AWGA is on a calendar fiscal year, while club's seasons begin and end at various times throughout the year. The established billing procedure was reviewed and it has been concluded that it is the most manageable system. We must continue billing

\*Continued on page 4

### Club Representative Certification

Beginning January 1, 2002, the USGA will impose additional requirements on state and regional associations who are licensed to utilize the USGA Course Rating System and the USGA Handicap System to compute, certify and issue USGA Handicap Indexes. Most significantly, state associations will be required to insure that all individual member clubs have a representative certified in the requirements of the USGA Handicap System. The USGA will work together with the associations to develop and present the certification seminars. NOT TO PANIC!!! The requirement is for a club representative to attend at least one seminar during the term of the association's agreement, which extends to 2005, so there is time to develop and implement an effective certification program.

We are excited about the opportunity to work with the USGA on these seminars and are also excited about the additional knowledge we will be able to impart at the local club level. The first such seminar will be conducted by the USGA and has been scheduled for Wednesday, February 27<sup>th</sup> in Phoenix. The exact site has not yet been selected. Look for more information shortly.

### USGA Handicap System Manual Changes

2002 is a revision year for the USGA Handicap System, which is updated every four years. Following are three of the most significant changes made for 2002. For a complete discussion of all changes, please visit the AWGA web page at [www.awga.org](http://www.awga.org) and click on News.

Section 5-1.f. Unacceptable Scores - This section was modified to specifically address when scores

\*Continued on page 3

#### In This Issue:

- Directory & Newsletter Distribution
- Membership Fee Increase
- Club Representative Certification
- 2002 Annual Meeting
- Tournament Results State Medallion State Scotch
- Arizona's USGA State Team Finishes Third
- Rebate Policy
- Handicap System Manual Changes
- Do you know Your Board Members?
- Tournament Schedule

# TOURNAMENT RESULTS

## State Scotch

### OVERALL WINNERS

GROSS .....		NET .....	
Cheryl Jones .....		Maryann Fleharty .....	
Vivian Noble ..... 158		Anna Mascho ..... 132	
GROSS ..... FIRST FLIGHT		NET .....	
1 <sup>ST</sup> Carol Kitson .....		1 <sup>ST</sup> Carolyn Beck .....	
Janet Weber ..... 161		(Tie) Carolyn Itzaina ..... 150	
.....		Sharon Garner .....	
.....		Carole Ewy ..... 150	
GROSS ..... SECOND FLIGHT		NET .....	
1 <sup>ST</sup> Joan Jensen .....		1 <sup>ST</sup> Mary Henson .....	
Janet Riess ..... 162		Pam Goodeyon ..... 142	
2 <sup>ND</sup> Judy Gayok .....		2 <sup>ND</sup> Mo Cruikshank .....	
Kelly Paterson ..... 173		Shari Quarty ..... 143	
(Tie) Norma Hill .....		3 <sup>RD</sup> Sallie McCutcheon .....	
Louise Blomberg ..... 173		Mary Ann Thomas ..... 146	
GROSS ..... THIRD FLIGHT		NET .....	
1 <sup>ST</sup> Linda Farmin .....		1 <sup>ST</sup> Nan Sharp .....	
Mary Lavigne ..... 178		(Tie) Bernice Tracey ..... 147	
GROSS ..... FOURTH FLIGHT		NET .....	
1 <sup>ST</sup> Sergene Jensen .....		1 <sup>ST</sup> Namki Newlen .....	
Gail Porter ..... 176		Kay Anderson ..... 144	
2 <sup>ND</sup> Gladys Utoft .....		2 <sup>ND</sup> Shayron Conrad .....	
Karen Good ..... 184		Jan Townsend ..... 144	
GROSS ..... FIFTH FLIGHT		NET .....	
1 <sup>ST</sup> Janet Wietersen .....		1 <sup>ST</sup> Marnie Lucchini .....	
Kathryn Riddlehoover ..... 188		Cathy Mascari ..... 145	
2 <sup>ND</sup> Martie Focht .....		2 <sup>ND</sup> Robin Hooker .....	
Elouise Perrin ..... 193		Lupe Schultz ..... 149	
GROSS ..... SIXTH FLIGHT		NET .....	
1 <sup>ST</sup> Judy Decker .....		1 <sup>ST</sup> Pearl Christison .....	
Mary Byrd ..... 201		Brock Mabb ..... 152	

## 2002 Annual Meeting

The 2002 Arizona Women's Golf Association Annual Meeting & Banquet will be held on Tuesday, January 29, 2002 in the Crystal Ballroom of the Phoenix Country Club located at 2901 N. 7<sup>th</sup> Street in Phoenix, Arizona. The meeting will be conducted from 4:00pm to 5:30pm. All AWGA members are invited to attend.

The business meeting will be followed by a no-host cocktail party from 5:30pm to 6:30pm and dinner from 6:30pm to 8:30pm. Members will be asked to pay a token registration fee of \$10.00 per member and \$25.00 per guest, to help offset the cost of the banquet. Live background music will accompany cocktails for your enjoyment. The Arizona Women's Golf Association President will present the program, which will include guest speaker Greg Allen, the University of Arizona Women's Golf Coach. The association will also be presenting the award to the 2001 Player of the Year as well as several new volunteer recognition awards.

In addition to providing meaningful information regarding the status and activities of the AWGA, the Annual Meeting & Banquet will be an enjoyable evening of celebration. You may register to attend by printing and mailing a registration form from the AWGA web page at [www.awga.org](http://www.awga.org), or contacting the office directly at 602-253-5655. We are excited about this event and look forward to seeing many of you there.

## Rebate Policy

(Print out a rebate form from our web page at [www.awga.org](http://www.awga.org))

The Arizona Women's Golf Association offers a rebate for those members who pay duplicate fees through more than one member club.

Membership fees shall be considered "duplicate fees" when more than one club uses the same scoring record for managing the member's handicap and the member has paid AWGA membership fees through more than one club using that scoring record. An individual holding a membership in a 9-hole club and another in an 18-hole club shall not be considered as having paid duplicate fees.

Rebates will be processed in one of the following ways.

1)

Each member club will be billed one time each calendar year for each individual listed as an active member of that club in the club's member roster at the time of the annual or quarterly billing. The member, who has paid one or more duplicate fee, shall submit a request for rebate. The AWGA staff shall review the request to verify that more than one AWGA membership fee has been received for that member, and shall refund any fees paid in excess of one (1) \$20.00 membership fee per calendar year. Rebates shall be made as soon as is practicable and shall be made directly to the individual member.

2)

The Handicap Chair or other authorized individual at a club may request a "Club Credit". In order to receive a club credit, the club must compile and submit to the AWGA, a list of members who have paid a fee through another club, indicating which other club that member has paid through. The AWGA staff will perform the same review as if the requests were made individually, and a credit will be issued against the requesting club's open invoice, for all members whose fees have been paid by another club. All club credits must be requested and outstanding fees paid within the 60-day term as specified in Article IV, Section 2 of the association Bylaws.

Receipt of a rebate will not affect any club memberships the individual maintains. She is entitled to represent any one of these clubs at any AWGA event requiring her to designate the club she represents. This applies to but is not limited to State Medallion Club Team Tournament, the Prather Team Trophy, and the Mary Lou Sauer Award.

## ARIZONA WOMEN'S GOLF NEWS

is an official publication of the  
Arizona Women's Golf Association

141 E. Palm Lane, Suite 210, Phoenix, AZ 85004-1555  
(602) 253-5655 • 800-442-AWGA • Fax: (602) 253-6210

E-mail: [awga@usga.org](mailto:awga@usga.org) • Website: [www.awga.org](http://www.awga.org)

### BOARD OF DIRECTORS

FLORENCE KOCH ..... President  
LINDA DAL SIN ..... Vice President  
BETSY PAUL ..... Secretary  
DONA DUNOVANT ..... Treasurer  
EVELYN DAVIS ..... Director of Awards/Prizes  
ELAINE HOGAN ..... Director of Events  
PATRICIA TRIMBELL ..... Director of Rules  
CAROLE EWY ..... Director of Sites  
TEDDI LEWIS ..... Director of Tournaments

### APPOINTED OFFICES

BARBARA SIMMONS ..... Course Rating Administrator  
MARY LONG ..... Junior Golf Administrator

### STAFF

MARY LONG ..... Executive Director  
MAUREEN OSHEA ..... Executive Assistant  
CHRIS OGLE ..... Golf Coordinator  
JULIE STECHENFINGER ..... USGA PJ Boatwright

## Handicap System Manual Changes continued...

made with the aid of artificial devices are unacceptable for handicap purposes. The manual now states that a score is unacceptable only if the artificial device is used during the execution of a stroke. For example, if the golf cart has a GPS device, a score made utilizing that device is acceptable, because while it may have assisted you in the selection of your club, it did not assist you in making the stroke. The information provided by the GPS system is ruled as generally available information. On the contrary, utilizing a device that constrains a player's swing plane would result in an unacceptable score, because it would be utilized during the execution of a stroke.

Section 5-2 – Posting Scores – The handicap system has long allowed the local club's handicap committee to adopt a policy allowing members to "occasionally" return scores via mail, facsimile, or email to be posted to her USGA Handicap record. Beginning January 1, 2002, the system will also allow the club to adopt a policy allowing members to "occasionally" post scores directly to her handicap record via the Internet. The definition of "occasionally" is left to the individual club, but it is recommended that in no case should a majority of the scores in a player's 20 score history be Internet scores. The preferred way to return a score is still for the player to post at the golf course directly following the completion of her round. The AWGA will enable Internet posting to take place through our web page, should a club choose to adopt this policy. The club, the handicap computation software and state association must meet several other conditions in order for any policy adopted to comply with the USGA Handicap System. Look for more information in the next newsletter, as we develop this capability. In the meantime, please feel free to direct questions or suggestions regarding the implementation of this change to [awga@usga.org](mailto:awga@usga.org). Your active participation will help insure a well thought out and effective implementation.

Appendix A – Short Course Handicap Procedures – A golf course of less than 3000 yards may not be issued a USGA Course Rating. While it is still true that scores made on such a course may not be posted for USGA Handicap Index purposes, a new rating procedure has been created which will allow the courses to be rated and scores posted to a LOCAL Handicap. A local handicap is one which may not be used in competitions except those conducted at and among members of the LOCAL or HOME club. The letters "SL" will identify short Course handicaps.

These are your Board Members  
(photos on page 4)...

1. Betsy Paul
2. Dona Dunovant
3. Pat Trimbell
4. Florence Koch
5. Elaine Hogan-Parkinson

## NEW AWGA CLUBS

### WELCOME

to our new AWGA Member Clubs:

Havasu Island WGA  
Las Colinas WGA

### WELCOME

to our new AWGA Associate Clubs:

Thunderbird Golf Club  
Bouganvilla Golf Club

(An Associate Club is one that has not yet established an AWGA Women's Club, but wishes to maintain a USGA course rating for play by women.)

## CONGRATULATIONS To The Following Ladies On Their HOLES IN ONE!!

DATE	NAME	CLUB AFFILIATION
04/18/01	Lupe Sutton	Lake Havasu WGA
06/03/01	Anita Seeger	Catalina CC
08/24/01	Chrys Rolf	Westbrook Village Vistas
9/22/01	Dorothy Olson	Westbrook Village
09/24/01	Loretta Chadderdon	Ironwood GC
09/30/01	Freddie Porritt	SaddleBrook CC
10/03/01	April Kilfoyle	Grayhawk GC
10/04/01	Pamela Pond	Quailwood Greens GC
10/11/01	Lisa Seal	Troon GC
10/20/01	Bettie Karafa	Pueblo del Sol GC
10/25/01	Connie Rupiper	Oakcreek CC
11/13/01	June Formann	SunCity Grand
11/13/01	Anita Conwell	Sun City Grand
11/21/01	Lynn Green	Cave Creek GC
11/30/01	Dawn Bush	Oakcreek CC

Please report all holes-in-one as they occur. Holes-in-one occurring prior to the previous newsletter publication date may be excluded from publication.

## Membership Fee Increase continued....

as we have in the past. For the future, we are revising our budgeting procedures to insure that any future necessary fee increase will be anticipated and announced further in advance of the implementation date. In this way we will minimize the inconvenience our clubs experience in collecting their fees.

As always, the Board of Directors goal is to make decisions in the best interest of the membership and the continuing success of the AWGA.



From left to right, Florence Koch, Tui Selveratnam, Lynn Simmons, and Missy Farr-Kaye.

**Thank you ladies for making us all proud of you and our state.**

## Arizona's USGA Women's State Team Finishes Third in the Nation

Beginning in 1997, the USGA has conducted a biannual State Team Championship in which three-woman teams representing their home states compete in a 54-hole stroke play competition for the title. The AWGA has sponsored a team to represent our state at each of the three championships. The 2001 championship was held at Woodhill Country Club in Wayzata, MN on September 23-25.

Arizona's 2001 team finished third in the nation behind the home team from Minnesota and the team from Maryland. In addition, team member Missy Farr-Kaye placed 6<sup>th</sup> individually, posting a three round total of 228.

The 2001 Arizona team was selected based on criteria first established in 1999, which required the players to submit a written request to be added to the list of contenders and participate in the required number of tournaments to qualify for selection. The players then competed in a 36-hole play off which was held August 11<sup>th</sup> and 12<sup>th</sup> at Aguila Golf Course. Thuhasini Selvaratnam and Lynn Simmons were selected based on their performance in that play-off. Missy Farr-Kaye was granted an exemption onto the team based on her performance this year. Missy is the 2001 Arizona State Women's Match Play Champion and went to the final match in the USGA Women's PubLinks Championship.

The AWGA will sponsor a team again for the 2003 competition, which will be held at Wellesley Country Club in Wellesley MA.

## Do You Know Who Your Board Members Are?

The fall 2001 newsletter included a test to see if you know your AWGA Board members. Here's the follow up. Can you identify these 5 board members? Match the faces of the AWGA Board Members with their names and responsibilities. The AWGA is directed by nine board members, which are elected from the membership representing their respective regions of the state. Together, these nine talented and dedicated women direct the policies of your state association.

Florence Koch, Tucson, President, 2000 and 2001, Sahuaro Golf Club and Silverbell WGA

Linda Dalsin, Flagstaff, Vice President, 2001, Aspen Valley and Elden Hills WGA

Betsy Paul, Cave Creek, Secretary, 2001, Cave Creek Golf Club WGA

Dona Dunovant, Phoenix, Treasurer, 2001, TPC of Scottsdale WGA

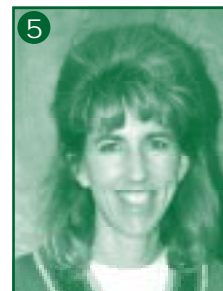
Evelyn Davis, Yuma, Awards and Prizes, 2001, Yuma Golf & Country Club WGA

Elaine Hogan-Parkinson, Mesa, Events, 2001, Mesa Country Club WGA

Patricia Trimbell, Green Valley, Rules, 1999-2001, Canoa Hills Golf Club WGA

Carole Ewy, Sun Lakes, Sites, 2001, Oakwood Country Club WGA

Teddi Lewis, Prescott, Tournaments, 1998-2001, Antelope Hills Golf Club WGA



**Directory & Newsletter Distribution continued....**

invaluable. As a result we are changing the distribution of the directory. Directories will be mailed to only those individuals who we know utilize the information. We will supply the State Representative of each club a sufficient quantity of directories so members may obtain a copy through her. An ample amount will be stocked at the AWGA office.

While most members don't use the directory, we were pleased to find that our newsletter is very well read. We will be increasing the frequency of newsletters, which will also include entry forms to AWGA tournaments. Entry forms are also available on our website at [www.awga.org](http://www.awga.org). All tournament information will also be included in the directories. By issuing more newsletters we can reach our members on a more personal basis as well as keep them informed on current issues and events. Newsletter distribution will coincide as closely as possible with opening dates for each tournament, so members will have an entry form sent directly to their home in time to enter a tournament. We hope this will be more convenient for you.

We are confident that these changes are positive and will help our members to stay informed about women's golf in Arizona. Remember that you are still able to receive a 2002 Tournament Calendar and Directory at any time by requesting one through your state representative or contacting our office.

TOURNAMENT RESULTS			
State Medallion Club Team Tournament			
<b>OVERALL WINNERS</b>			
Cheryl Jones & Mary Plagmann		146	
Papago GC			
<b>FIRST FLIGHT</b>			
1 <sup>ST</sup>	Donna Marden .....	2 <sup>ND</sup>	Tina Huiskamp .....
	Linda Stewart ..... 148		Jan Hair ..... 149
	Silverbell GC		Arizona CC
<b>SECOND FLIGHT</b>			
1 <sup>ST</sup>	Pat Parker .....	2 <sup>ND</sup>	Janet Cothren .....
	Rosalie Dressler ..... 147	(Tie)	Jane Ross ..... 154
	Fountain Hills GC		Elephant Rocks GC
		2 <sup>ND</sup>	Debbie Leonard .....
		(Tie)	Julie Brackett ..... 154
			Cerbat Cliff GC
<b>THIRD FLIGHT</b>			
1 <sup>ST</sup>	Teddi Lewis .....	2 <sup>ND</sup>	LeeAnn Morgan .....
(Tie)	Julianne Dodds ..... 156	(Tie)	Allene Mueller ..... 158
	Antelope Hill GA		Oakcreek CC
1 <sup>ST</sup>	Patty Kimball .....	2 <sup>ND</sup>	Virgina Piper .....
(Tie)	Barbara Edwards ..... 156	(Tie)	Mary Jones ..... 158
	EWGA - Phoenix Chapter		Pinewood CC
<b>FOURTH FLIGHT</b>			
1 <sup>ST</sup>	Diane Klein .....	2 <sup>ND</sup>	Dawnielle Baca .....
	Mary Eicken ..... 158		J.C. Burleigh ..... 159
	San Marcos GC		EWGA - Old Pueblo Chapter
3 <sup>RD</sup>	Linda Newman .....	3 <sup>RD</sup>	Barbara Hall .....
	Sandra Anderson ..... 161	(Tie)	Dolly Alspach ..... 161
	Riverview GC		S C Vistoso - Gold
<b>FIFTH FLIGHT</b>			
1 <sup>ST</sup>	Donna Farry .....	2 <sup>ND</sup>	Nadine Sanders .....
	Vergie Poe ..... 154		Judie Shaw ..... 161
	Toka Sticks WC		Cottonwood GC
<b>SIXTH FLIGHT</b>			
1 <sup>ST</sup>	Donna Clutter .....	2 <sup>ND</sup>	Gail Foreman .....
	Dorothy Marcum ..... 167		Dorothy Campbell ..... 167
	Glen Canyon CC		Tonto Verde GC

# TOURNAMENT SCHEDULE

## – 2002 TOURNAMENTS –

### WEEKEND CLASIC

Apache Creek Golf Club  
February 24, 2002 • Apache Junct.

### SHORT COURSE CHAMPIONSHIP

TBA

### STATE FOUR-BALL TOURNAMENT

San Ignacio Golf Club  
April 15-16, 2002 • Green Valley

### STATE MATCH PLAY CHAMPIONSHIP

Club West Golf Course  
May 20-23, 2002 • Phoenix

### STATE PARTNERS TOURNAMENT

Hassayampa Golf Club  
June 10-11, 2002  
Prescott

### DAY IN HADES TOURNAMENT

Ancala Country Club  
August 6, 2002 • Scottsdale

### STATE STROKE PLAY CHAMPIONSHIP

Terravita Golf Club  
August 26-28, 2002 • Scottsdale

### STATE SENIORS CHAMPIONSHIP

White Mountain Country Club  
September 17-19, 2002 • Pinetop

### STATE SCOTCH CHAMPIONSHIP

TBA

### 9-HOLE TOURNAMENT

Prescott Country Club  
October 7, 2002 • Prescott

### STATE MEDALLION TEAM TOURNAMENT

Whirlwind Golf Club  
December 2, 2002 • Chandler

## NINE HOLE PLAYERS

### MEDALLION CLUB TEAM TOURNAMENT

1 <sup>ST</sup> Place		2 <sup>ND</sup> Place	
Gail Bavis .....		Patty Riley .....	
Shirley Mukhar	76	Joanne Schreiber .....	88
Oakwood CC		Quailwood GC	

# WEEKEND CLASSIC

Apache Creek Golf Club, 3401 S. Ironwood, Apache Junction

The tournament shall consist of 18 holes of individual stroke play. The champions shall be the low gross and low net scorers over the field. Flights will be determined by handicap index. Maximum handicap index, 35.5. The field is limited to the first 100 entries. Play will begin with a 12:30 p.m. Shotgun Start.

Entry fee of \$65.00 per entrant will include green fees, cart fees, lunch, prizes and awards. Entrants must use an official entry form available in this newsletter, in the 2002 Tournament Calendar and Directory or on the AWGA web page at [www.awga.org](http://www.awga.org).

Make checks payable to: AWGA, and mail to:

141 E. Palm Lane, #210, Phoenix, Arizona, 85004-1555.

OPENING DATE: JANUARY 2, 2002 CLOSING DATE: FEBRUARY 14, 2002

Juniors 14-17 years of age must have a USGA handicap index of 12.0 or less to participate.

The Apache Creek Weekend Classic is an AWGA 2002 Player of the Year point tournament

Apache Creek Golf Club has been the site of the first two Weekend Classic tournaments and remains a popular spot. A rewarding and relaxing championship golf course that showcases the beauty of the Superstition Mountains with lush fairways, and running streams. For directions to the course and other course information, visit their website at [www.apachecreekgc.com](http://www.apachecreekgc.com).

If you have never played in a state tournament, this is a great place to start. It is a straight forward course with some water, but not many bunkers. It will play to just over 5400 yards. Handicaps generally run from the scratch player right up to the USGA maximum of 36. It will be flighted, of course. Flights will be kept to a maximum of 10 strokes difference from the low to the high, whenever possible, thereby giving everybody a shot at winning their flight. There will be equal prizes for the gross and net winners in each flight, standard practice for all of our tournaments.

Come on out, play some golf and meet some new friends. No pressure, just a day of golf and fun.

Betsy Paul, Tournament Director



## 3rd ANNUAL WEEKEND CLASSIC SUNDAY, FEBRUARY 24, 2002



### OFFICIAL ENTRY FORM

PLAYER NAME \_\_\_\_\_ TELEPHONE \_\_\_\_\_ AWGA# \_\_\_\_\_

ADDRESS \_\_\_\_\_ CITY/ZIP \_\_\_\_\_

CLUB REPRESENTED \_\_\_\_\_

I am age to 14-17 \_\_\_\_\_ I am a past board member \_\_\_\_\_ I am a past Champion of this tournament \_\_\_\_\_ Year \_\_\_\_\_

I have read and agree to abide by the Conditions for AWGA Competitions as published in the current AWGA Directory and at [www.awga.org](http://www.awga.org)

Enclosed is my check or money order for **\$65.00** payable to the AWGA. SIGNATURE \_\_\_\_\_

Mail entry and fee to: **Arizona Women's Golf Association** 141 E. Palm Lane, Suite #210, Phoenix, AZ 85004-1555

#### ONE ENTRY PER ENVELOPE PLEASE

**ALL ENTRIES WILL BE ACKNOWLEDGED IN WRITING. ADDITIONAL INFORMATION REGARDING REGISTRATION AND CONDITIONS OF COMPETITION WILL BE PROVIDED AT THAT TIME**

PRRST STD  
U.S. POSTAGE  
PAID  
PERMIT #744  
PHOENIX, AZ

ARIZONA WOMEN'S GOLF ASSOCIATION  
141 EAST PALM LANE, SUITE 210  
PHOENIX, ARIZONA 85004

